

# ThermAir Burners

## Model TA300 version 1.00

### Main Specifications - TA300

PARAMETER		SPECIFICATIONS	
		English	Metric
Maximum input  (To maintain 15% excess air with the standard air orifice and standard combustion air blower.)	60 Hz packaged blower	Capacity @ Chamber Pressure	
		BTU/hr @ "w.c.	kW @ mbar
		3,425,000 @ -1.0	1004 @ -2,5
		3,250,000 @ 0.0	953 @ 0,0
		3,098,000 @ 1.0	908 @ 2,5
Minimum input	Natural Gas, Propane or Butane	BTU/hr	kW
		100,000	29,3
Main gas inlet pressure • fuel pressure at gas inlet (Tap "B")	Natural Gas	7.0 "w.c.	17 mbar
	Propane	7.7 "w.c.	19 mbar
	Butane	7.0 "w.c.	17 mbar
High fire flame length • measured from the burner flange.	Natural gas	82 in	2080 mm
	Propane or Butane	102 in	2590 mm
Maximum chamber temperature	Alloy Tube	°F	°C
		1500	815
Flame detection	UV scanner only		
Fuel	Natural Gas, Propane or Butane. For any other mixed gas, contact Eclipse Combustion for orifice sizing		

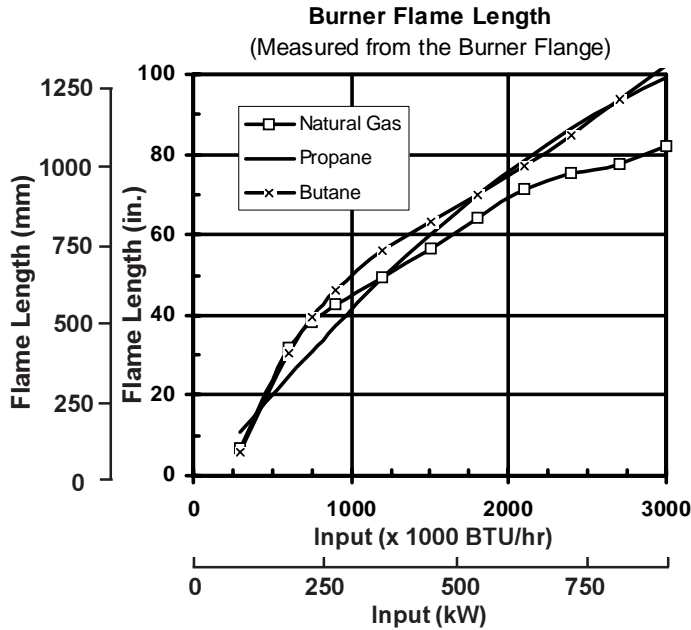
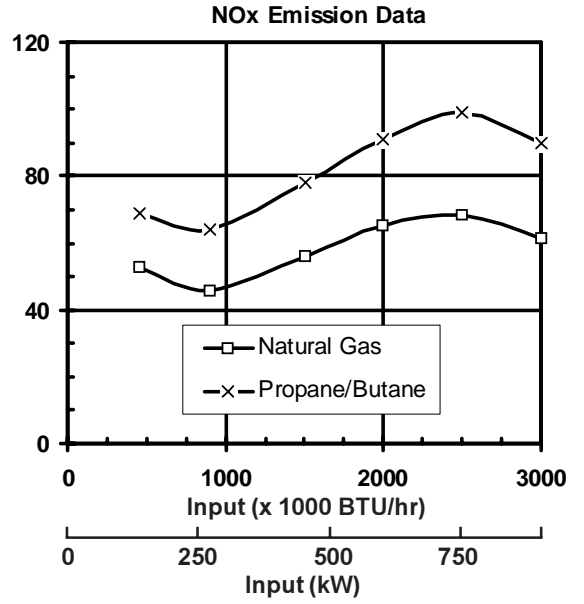
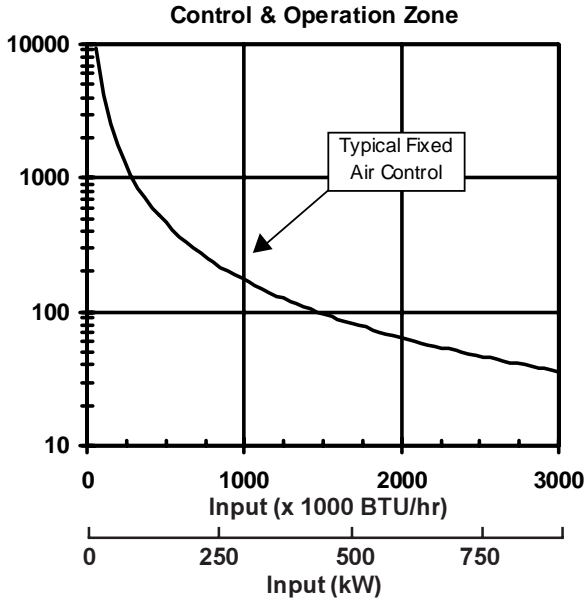
- All information is based on laboratory testing in neutral (0.0" w.c.) chamber with standard combustor design. Different chamber conditions and/or combustor design will affect the data.
- Maximum inputs are given for the standard combustion air blower without an air filter.
- All inputs based upon gross calorific values and standard conditions: 1 atmosphere, 70° F ( 21°C).
- Blower motor service factors greater than 1.0 may be required when firing into negative chamber pressure applications. For specific application questions, contact your Eclipse Combustion representative.
- Eclipse reserves the right to change the construction and/or configuration of our products at any time without being obliged to adjust earlier supplies accordingly.



Eclipse Combustion

ISO 9001 Registered

# Performance Graphs ThermAir TA300



**Notes on emission data**

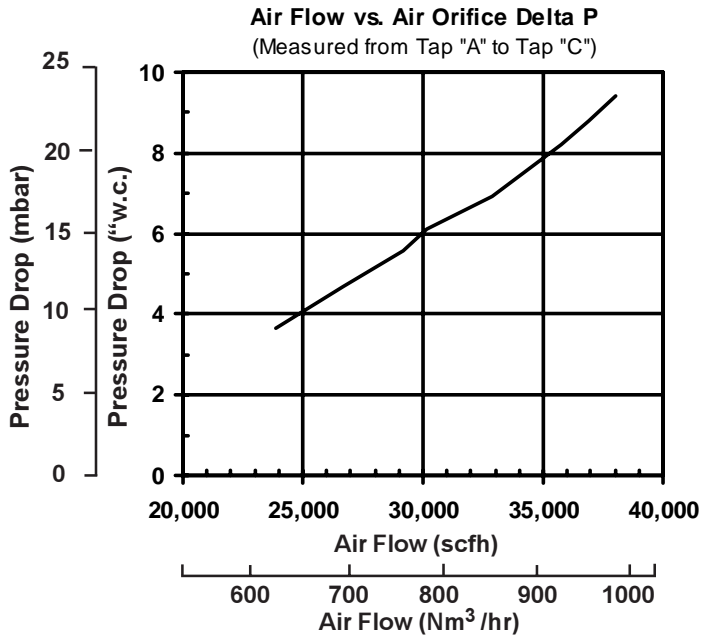
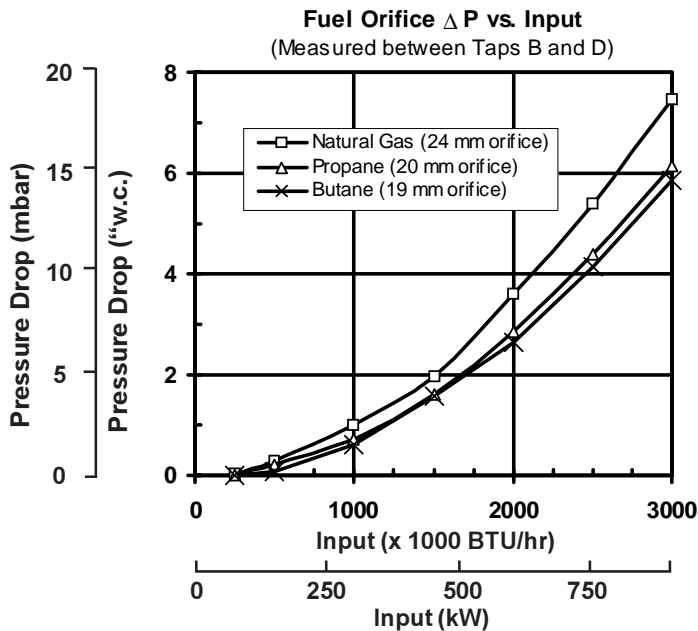
**NOx emission data is given for:**

- Ambient combustion air ~70° F (20° C)
- Minimal process air velocity
- ppm volume dry at 3% O<sub>2</sub>
- Neutral chamber pressure

**Emissions are influenced by:**

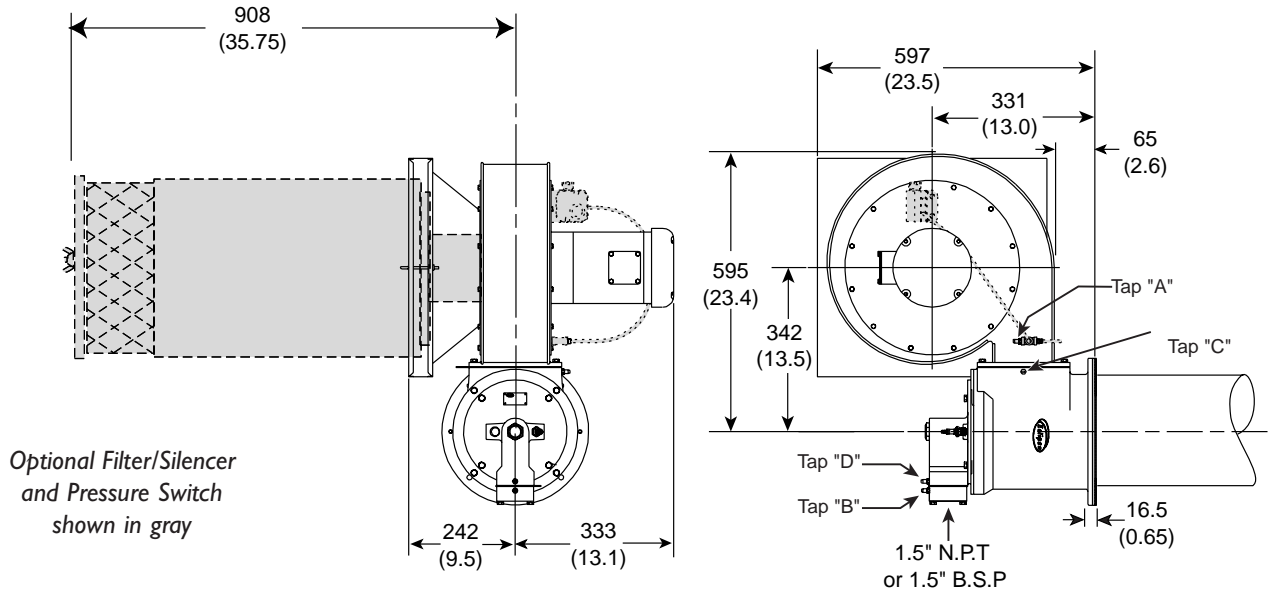
- Chamber conditions
- Fuel type
- Firing rate
- Combustion air temperature

**CO emission is largely influenced by chamber conditions. Contact your local Eclipse Combustion representative for an estimate of CO emission on your application.**



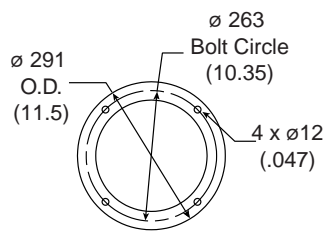
# Dimensions-TA300

mm (in)

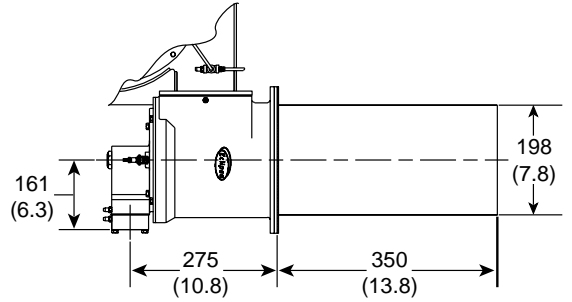


Port Connections	
Sparkplug	14mm
Flamerod or Scanner	0.5" NPT
Peepsight	1" NPT

Weights		
	lb	kg
Burner, w/ blower	157	71
Burner, less blower	89	40
Filter/Silencer	52	24

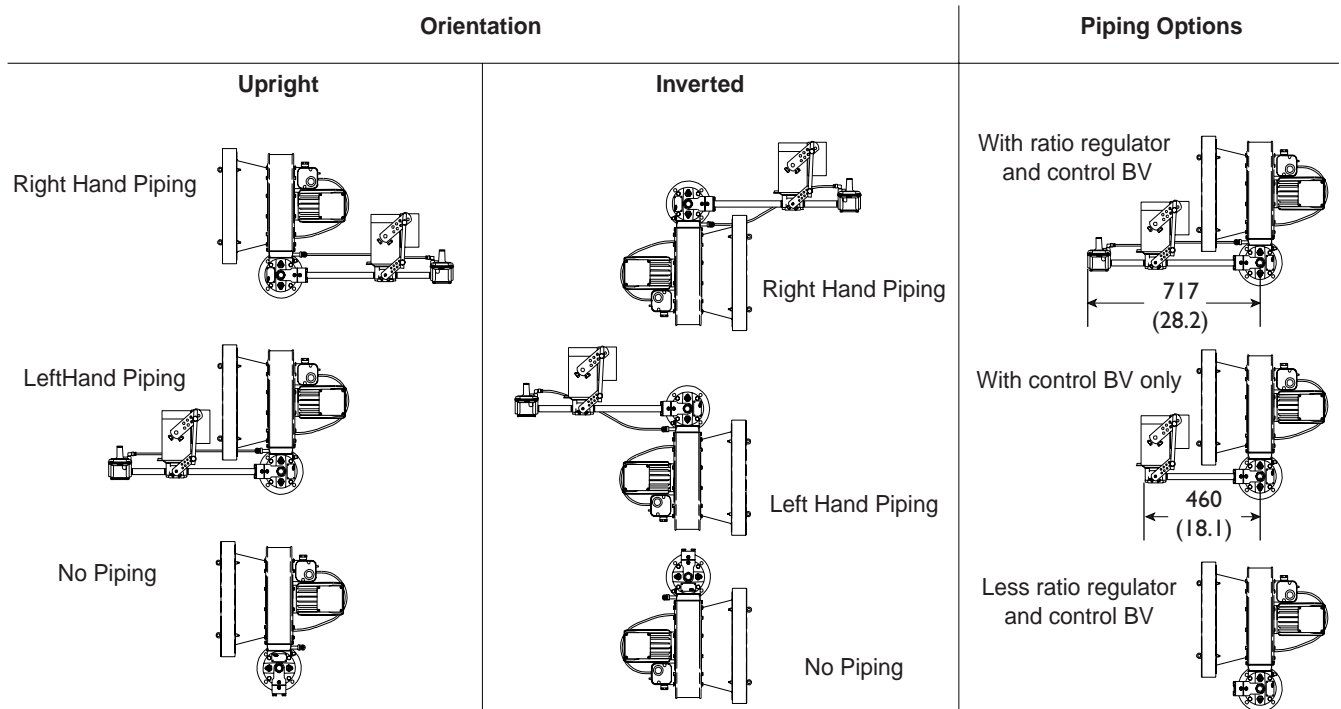


Mounting Pattern



310 Stainless Steel Alloy Tube

## Piping





**Offered By:**

Power Equipment Company  
2011 Williamsburg Road  
Richmond, Virginia 23231  
Phone (804) 236-3800  
Fax (804) 236-3882

---

[www.peconet.com](http://www.peconet.com)